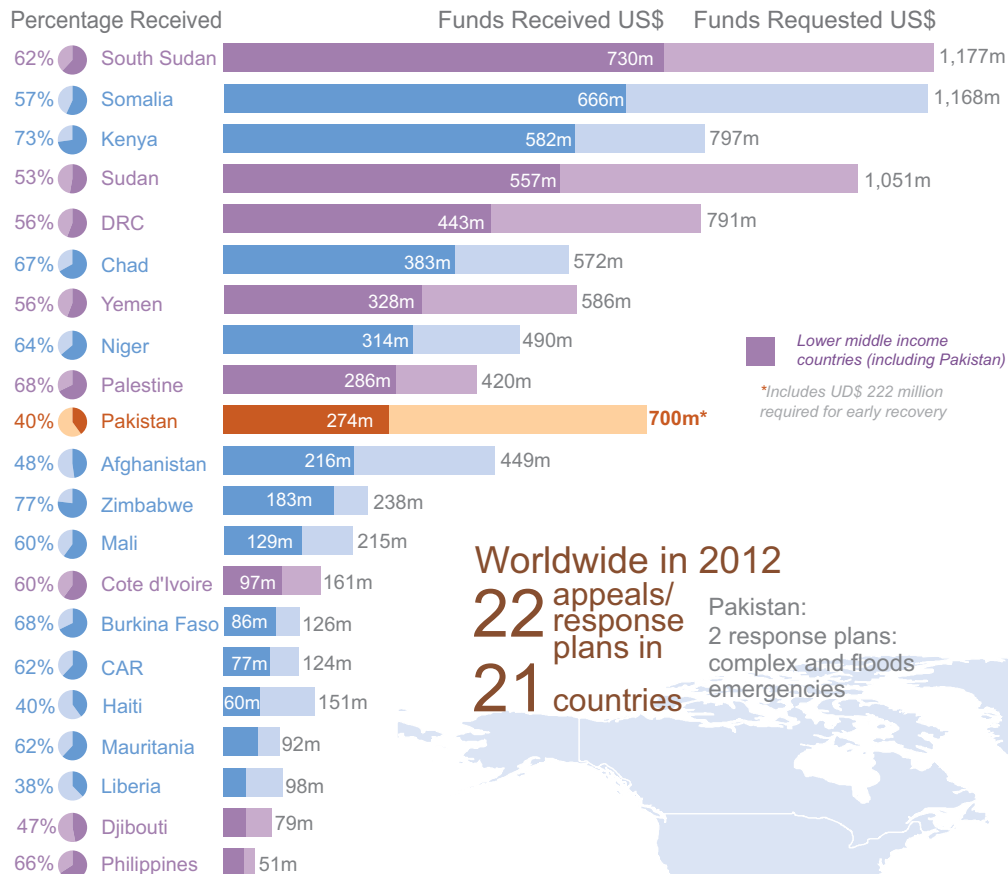


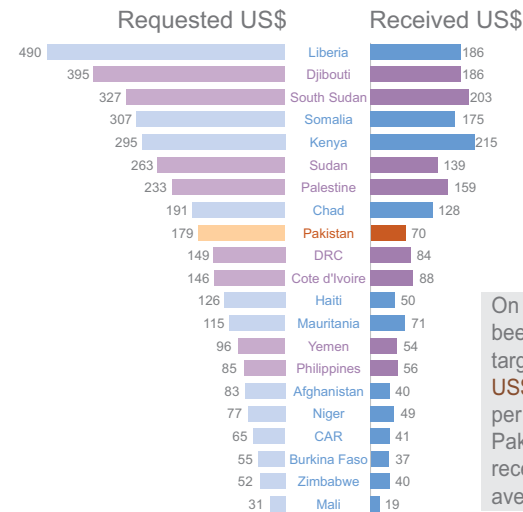
Global Overview of Funding Status (2012)



Targeted Population

| Rank | Country | Recipient (million) | % total Pop. |
|------|-----------------|---------------------|--------------|
| 1 | Mali | 6.9 | 42% |
| 2 | Niger | 6.4 | 39% |
| 3 | Yemen | 6.1 | 24% |
| 4 | Afghanistan | 5.4 | 16% |
| 5 | DRC | 5.3 | 8% |
| 6 | Zimbabwe | 4.6 | 35% |
| 7 | Sudan | 4 | 11% |
| 8 | Pakistan | 3.9 | 2% |
| 9 | Somalia | 3.8 | 39% |
| 10 | South Sudan | 3.6 | 34% |
| 11 | Chad | 3 | 25% |
| 12 | Kenya | 2.7 | 6% |
| 13 | Burkina Faso | 2.3 | 13% |
| 14 | CAR | 1.9 | 41% |
| 15 | Palestine | 1.8 | 42% |
| 16 | Haiti | 1.2 | 12% |
| 17 | Cote d'Ivoire | 1.1 | 5% |
| 18 | Mauritania | 0.8 | 22% |
| 19 | Philippines | 0.6 | 1% |
| 20 | Liberia | 0.2 | 5% |
| 21 | Djibouti | 0.2 | 22% |

US\$ requested and received per targeted recipient



On average, US\$ 145 has been appealed for per targeted recipient whereas US\$ 85 has been received per targeted recipient. In Pakistan, recipients have received US\$ 70 on average.

Worldwide in 2012

22 appeals/
response plans in
21 countries

Pakistan:
2 response plans:
complex and floods
emergencies

Worldwide in 2012

more than **US\$ 5.5 Billion** has been spent on
more than **66 Million** people targeted for assistance

Child Nutritional Status

| | Afghanistan | Cote d'Ivoire | DRC | Niger | Pakistan | Philippines | Sudan |
|-----------------------------------|-------------|---------------|-----|-------|-----------------|-------------|-------|
| Stunting (moderate and severe) | 59% | 40% | 43% | 47% | 42% | 7% | 32% |
| Wasting (moderate and severe) | 9% | 8% | 9% | 16% | 14% | - | 7% |
| Underweight (moderate and severe) | 33% | 16% | 24% | 40% | 31% | - | 22% |
| Underweight (severe) | 12% | 5% | 8% | 14% | 13% | - | 10% |

According to WHO, the emergency threshold for global acute malnutrition (GAM) is 15 per cent.

